

GAMBLING

myths and facts



Myth.

"I've been on a losing streak, so I am due to win soon"



Fact:

Just because you have been on a losing streak does not mean you are due a win. Don't chase a win and lose what you can't afford.

Myth.

"I'm feeling lucky"



Fact:

There are plenty of things in life that are beyond your control and gambling outcomes are one of them. Luck in gambling is absolute nonsense.

Myth.

"This machine is hot and due for a jackpot"



Fact:

There is no such thing as a "hot machine" or one that is due a big win. These machines are made to generate money, more people lose than win long term.

Myth.

"I can't have a problem, I am loaded"



Fact:

Problem gamblers become obsessed and can gamble away their money, their relationships, slip into debt, resort to stealing to feed their habit, lose their jobs and hit rock bottom very easily.

Myth.

"I'm a responsible person. I can't get addicted to gambling"



Fact:

Anyone can get addicted to gambling. It is very easy to develop addictive behaviours where one thinks about gambling all the time and lets it take over their lives.

GAMBLING

Support



Person with Addiction

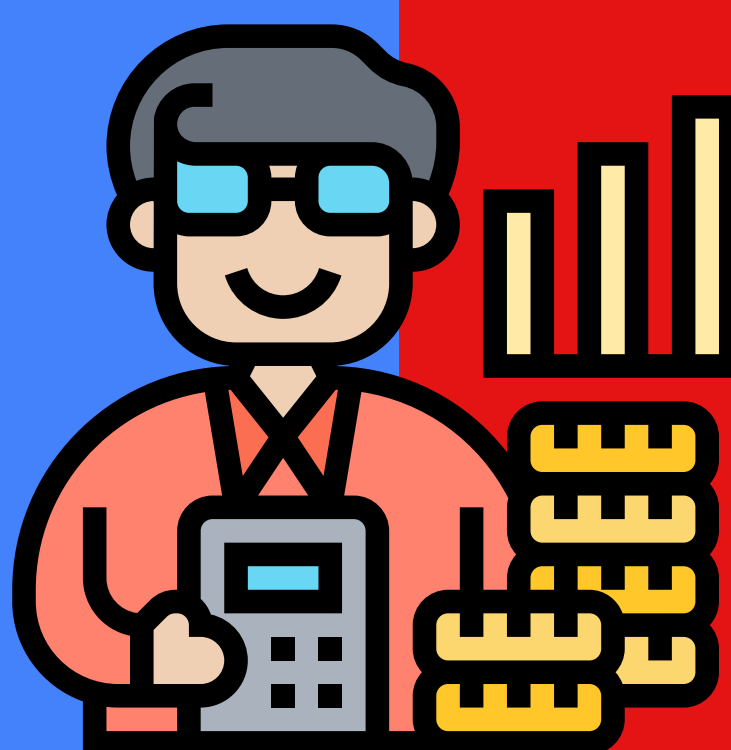
Open up and admit that there is a problem. Talk to a loved one or friend and disclose the real impact of the gambling.



Seek Professional Help;
Gambling Helpline:
08088020133. Debt Action
NI: 0800 9174607
Gamblers Anonymous:
028 71351329.
www.begambleaware.org



Speak to a financial advisor/
Citizens Advise.
Explore better money
management techniques and
any debt repayment plan
options.



Find a good sponsor/Friend
who you can speak to IF you
have the urge to gamble
again. This person should be
strong willed and will actively
discourage gambling
behaviour.



Friend /Family

Tell the person who you know
is gambling that you are
concerned about them and
want to help them.
Understand it's an addiction.

Encourage them to access
professional support.
Don't feel guilty or blame
yourself. Seek some
support for yourself.

Family/Close friends take
charge of finances e.g. credit
cards, bank cards and ensure
all necessary payments are
processed.

Support friend/sponsor by
actively discouraging
gambling behaviour. Only
COMMIT if you can do it;
ideally a Gambler Anonymous
support is allocated.

WHEN THE **FUN** STOPS **STOP**
gambleaware.co.uk